



ActiveAssist

**The assistance system for
multi-variant assembly tasks**

2.0



**WE MOVE.
YOU WIN.**

The freely configurable all-in-one system: modular, networked, interactive

With the ActiveAssist interactive assembly system, Rexroth concentrates its years of experience in the fields of lean production and ergonomic workstation design – and is expanding on this with pioneering Industry 4.0 intelligence.

At the heart of ActiveAssist is a freely configurable software that connects physical assembly workstations with the virtual world: completely networked, modularly extendable, easily integrated, and above all, extremely quick and easy to learn.

-
- 4 The advantages of the assistance system
 - 6 The software
 - 8 The networking
 - 10 ActiveAssist product structure
-

13 ActiveAssist MODULES

- 14 ActiveAssist basic set
 - 16 ActiveAssist projection module
 - 19 ActiveAssist hand-tracking module
-

23 ActiveAssist INTERFACES

- 24 ECI – Interface for external communication
-

25 ActiveAssist EXTENSION MODULES

- 26 Tool control unit extension module
 - 28 Tool integration extension module
 - 29 Tool localization extension module
 - 33 Product identification, bar code scanner
-

35 ActiveAssist ACCESSORIES

- 36 Label projection 45°
 - 37 HEAP connection kit
 - 38 Input unit push button
-

39 TECHNICAL DATA

- 40 Sample configurations

How can you assemble, order pick and produce multiple variants easily today?



How can you plan and configure more effectively and keep an overview?



How do you ensure productivity with a batch size of 1 or steadily increasing variant diversity?

How do you respond to poor process reliability during manual assembly?

The answer: through flexible production systems with extremely short conversion times. Ideally globally networked and throughout all phases, from creating users through to compiling interactive work instructions.

THE PERFECT ASSISTANCE - FOR ASSEMBLY WORKERS AND PRODUCTION PLANNERS

The development of ActiveAssist was based on everyday practice. The sophisticated software will enable you to quickly achieve a highly flexible and easy-to-use step by step assistance system for your employees.

INTUITIVE LEARNING AND APPLICATION

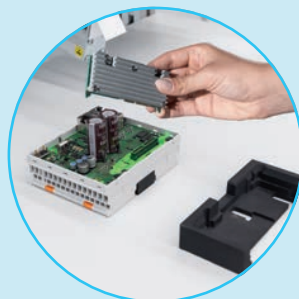
Assembly workers intuitively learn the assembly processes, are precisely led through the individual work steps and made aware of their errors. This allows the objective of "Single-Piece-Flow" to be easily achieved.

INTEGRATED PLANNING AND CONTROL

With ActiveAssist, planners are provided with a comfortable software tool to ensure the highest process reliability even with product changes at short notice. Using standard interfaces, ActiveAssist can easily be integrated with customer networks.

Get to know a highly effective system which, in its basic package, includes all the ideal features to enhance the quality and productivity of your assembly process. Introducing ActiveAssist.

ActiveAssist - in essence, a software that delivers an all-in-one solution



Configure the ActiveAssist all-in-one system according to your individual requirements: be it with just the basic set, with extensions for visualization and hand-tracking, or with additional extension modules.



Interactive work instruction



Visualization



Hand-tracking



MES/ERP connectivity



Tool control



Tool integration



Tool localization



Bar code scanner



Product identification HF



Pick-to-light

YOUR ADVANTAGES AT A GLANCE



Increased process reliability

Quickly and easily create standardized processes that are constantly checked by the software. The product can also identify itself. This gives you increased process reliability, even with a high degree of product variation – key factors for cost-efficient assembly.



Easy configuration

Web-based start - without programming - is possible; in this way, you benefit from a short implementation time as compared to classic pick-to-light sensors.



Precise interaction

The intuitive step-by-step guidance guides employees safely and precisely even through more demanding assembly tasks. By incorporating touchscreens, 3D cameras and projectors, various interactive assistance functions can be realized: from the projection of work instructions and light pulse guidance right through to the integration of tightening systems.



Optimum networking

Thanks to the web-based software with standardized interfaces, ActiveAssist is a completely flexible and open system. This enables you to seamlessly network all systems and assembly stations. And gives you worldwide access to your data within a network. Assembly 4.0, so to speak.



Improved ergonomics

The intuitive operation and individual support given to employees increases motivation, performance and efficiency. This reduces stress, errors, and downtimes, improving both the quality of the work and the product.



Built-in future-proof functionality

The modular design with continuously expandable functions ensures you also have the flexibility to address all the future requirements of tomorrow.



Summed up: higher efficiency

At last you can also produce manual assembly batch sizes of 1 economically with minimized waste and maximum quality.

Assembly assistance 4.0: Reach your target faster, completely networked with the ActiveAssist software

For improved planning, administration, and assembly: ActiveAssist provides continuous support for planners and workers, from the creation of users to the interactive employee guidance. Everything already included in the basic set.

ORDER MANAGEMENT

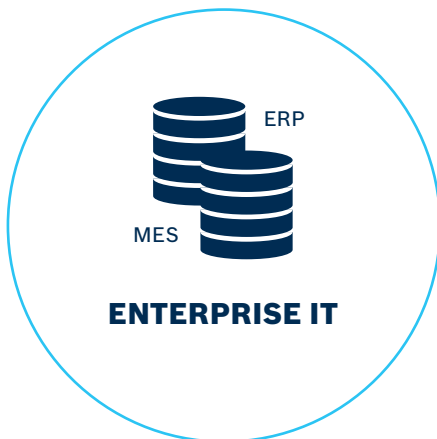
- ▶ Status display of production orders
- ▶ Connection to MES/ERP systems via XML file folder or REST API
- ▶ Create, pause and continue orders

USER MANAGEMENT

- ▶ Create and manage users and user groups
- ▶ Store user settings in a personal account (e.g. language, font size, etc.)

Manage your manual production, networked and with a complete overview!

Give every user the appropriate functions and content!



DEVICE MANAGEMENT

- ▶ Create a virtual image of the physical workstation
- ▶ Configure the material supply
- ▶ Configure additional devices such as pick-to-light, input unit, etc.
- ▶ Integrate open-protocol-enabled screwdrivers/tools
- ▶ Precise control of the tightening process via ultrasonic positioning technology

Configure each workstation quickly and easily!

WORK PLAN MANAGEMENT

- ▶ Quickly create work places by means of standardized templates
- ▶ Insert media data such as photos, videos, drawings, and PDFs
- ▶ Create, configure and place illuminated marks by means of Drag&Drop (geometric forms as well as images of components)
- ▶ Create, configure, and place step-based text projections
- ▶ Modify and copy work plans to quickly and easily create documentation for individual product variants

Create transparency and support your employees in a variant-specific manner by means of standardization!

EMPLOYEE GUIDANCE

- ▶ The correct variant documentation for the product is always available
- ▶ The employee is interactively and precisely guided through the process step by step
- ▶ The content and depth of the work instruction information can be individually adapted to the complexity of the process

Support your assembly workers in their daily work!



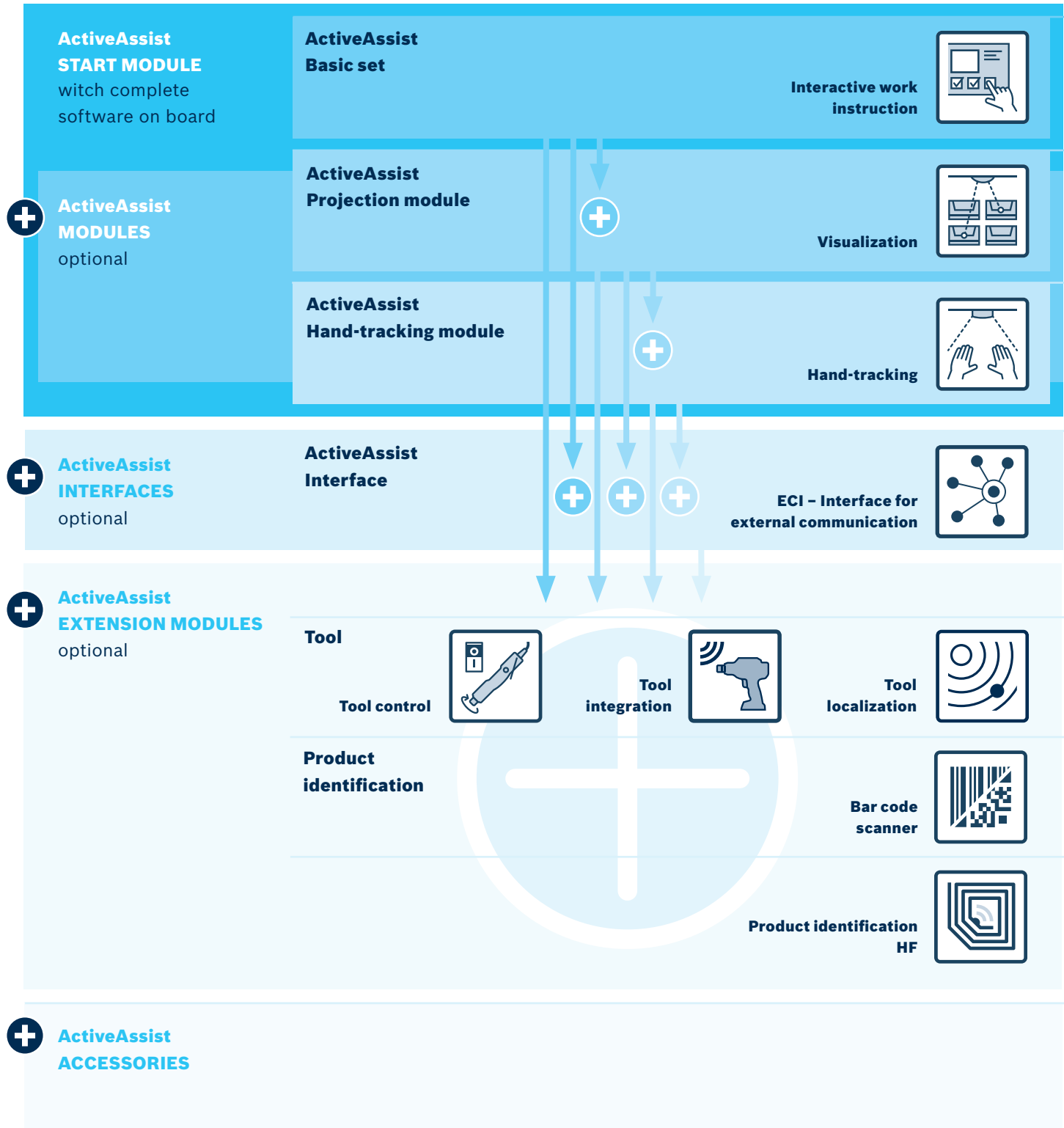
OPERATIVE ASSEMBLY - PRODUCTION

THE RESULT?

Interactive assembly assistance that is perfectly adapted to the individual requirements!

ActiveAssist product structure

MODULES



ActiveAssist HARDWARE AND SOFTWARE

ActiveAssist basic set	3 842 557 968	Complete ActiveAssist software, control cabinet incl. industrial PC, touchscreen 23", monitor bracket (swivel mounting)
ActiveAssist projection module	3 842 558 335	Projector unit
ActiveAssist hand-tracking module	3 842 558 436	3D camera module
ECI – Interface for external communication	3 842 562 139	Software license
Tool control unit extension module	3 842 558 447	Tool control
Tool integration extension module	3 842 558 603	License stick
Tool localization extension module	3 842 558 448	Ultrasonic receiver / transmitter, mounting plate
Bar code scanner product ident 433	3 842 558 437	based on 433 Hz
Bar code scanner product ident BT	3 842 558 578	based on Bluetooth
		on request
Label projection 45°	3 842 558 560	Button unit with three push buttons
HEAP connection kit	3 842 558 344	
Input unit push button	3 842 558 439	

ActiveAssist modules



ActiveAssist basic set	14
ActiveAssist projection module	16
ActiveAssist hand-tracking module	19

ActiveAssist basic set



The ActiveAssist basic set is the basis for every ActiveAssist system. The ActiveAssist basic set is used for the digitization and standardization of manual assembly processes.

ACCESSORIES

Required accessories

- Country-specific mains cable

DELIVERY INFORMATION

Scope of delivery

- ActiveAssist software key for Release 2.0
- Control cabinet (incl. industrial PC)
- 23" touchscreen incl. monitor bracket
- Data bar (3x USB connections, 2x network connections)
- Incl. required cables

- For setting up the software and managing the assembly workstation using a planning menu:
 - User management
 - Order management
 - Device manager
 - Work plan management
- Work plans created in the planning menu are displayed to the production employee as step-by-step instructions on the supplied touchscreen
- Process steps can be manually confirmed by touching the monitor or using the input unit push button
- Operation and configuration is performed via the supplied touchscreen
- With a Modbus interface for integrating sensors, such as pick-to-light modules (available on request, technology: Modbus TCP, PNP switching)

Notice:

- Unless otherwise specified, the ActiveAssist software is only compatible with hardware components from Bosch Rexroth
- The ActiveAssist basic set comes with Release 2.0 of the ActiveAssist software. Future versions are not included in the product scope
- The latest version of the ActiveAssist software can be downloaded in the product download area

Recommended accessories

- Input unit push button
- For comfortable operation, a keyboard / mouse combination is recommended (not included in the scope of delivery)

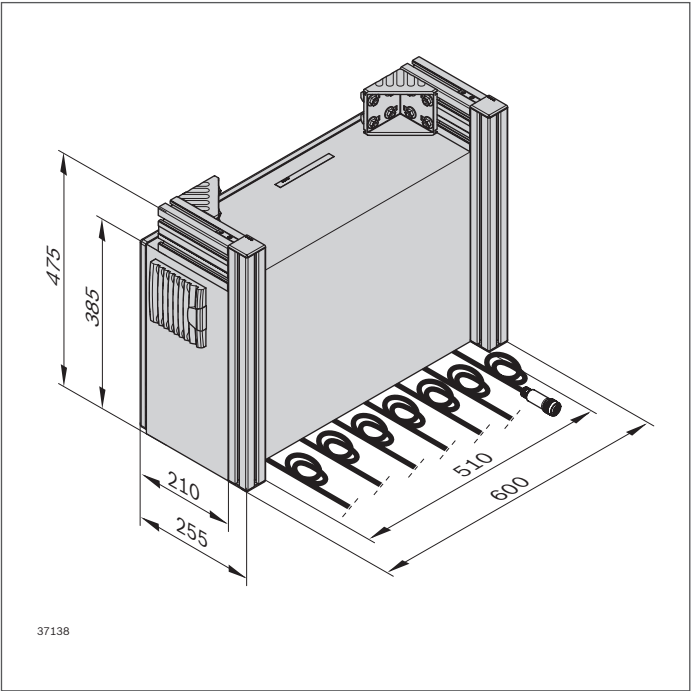
ORDERING INFORMATION

Product designation			Material number
ActiveAssist basic set			3 842 557 968

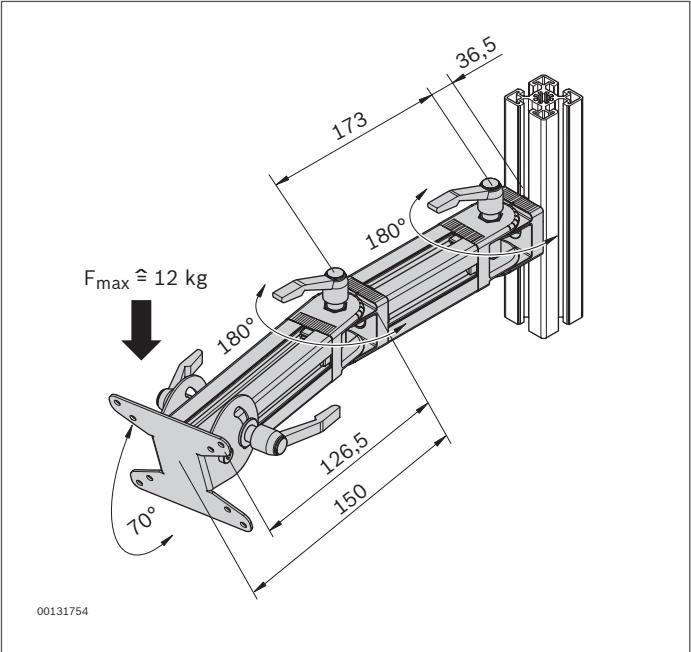
Product designation	Country	L (m)	Material number
Mains cable*	D/F	5	3 842 517 045
	GB	5	3 842 522 585
	CH	5	3 842 523 910
	open end	5	3 842 517 201

* HD mains cables can be found in the Manual Production Systems catalog

TECHNICAL DATA



Material number		3 842 557 968
Control cabinet properties		
Weight	kg	27.4
Control cabinet dimensions		
Width	mm	650
Height	mm	500
Depth	mm	260
Slot		10
Monitor properties		
Weight	kg	6.5
Monitor dimensions		
Screen diagonal	"	23
Width	mm	517.5
Height	mm	313.5
Depth	mm	65
Slot		10
Additional information		
Certification		CE



ActiveAssist – the perfect start to your production

Need help with setting up the ActiveAssist system or would like customized training? Contact us or your sales partner under:
www.boschrexoth.com

Customized support

- ▶ Setting up ActiveAssist
- ▶ ActiveAssist training
- ▶ Networking
- ▶ Integrating RFID and pick-to-light systems

ActiveAssist projection module



The ActiveAssist projection module guides employees through the assembly process by means of projected instructions and illuminated marks and symbols.

ACCESSORIES

Required accessories

- ▶ ActiveAssist basic set

- ▶ In addition to the touch monitor, work steps are projected directly onto the table surface by the projection module, thus ensuring optimum ergonomics in the workstation
- ▶ Illuminated marks can be projected onto the product features or tightening positions, giving the employee full process guidance
- ▶ The color and shape of the illuminated marks are freely selectable and can be scaled and placed in the work area using drag and drop
- ▶ The quantity of parts to be taken from the grab containers can be displayed on labels projection 45° (see Section ActiveAssist accessories)
- ▶ The work steps are manually confirmed by touching the monitor or using the input unit push button (accessories)
- ▶ In cooperation with the hand-tracking module, the correct grab containers from which the material is to be grabbed are illuminated
- ▶ Easy set-up of the beamer settings via the Industrial PC

Recommended accessories

- ▶ Input unit push button
- ▶ Label projection 45°

DELIVERY INFORMATION

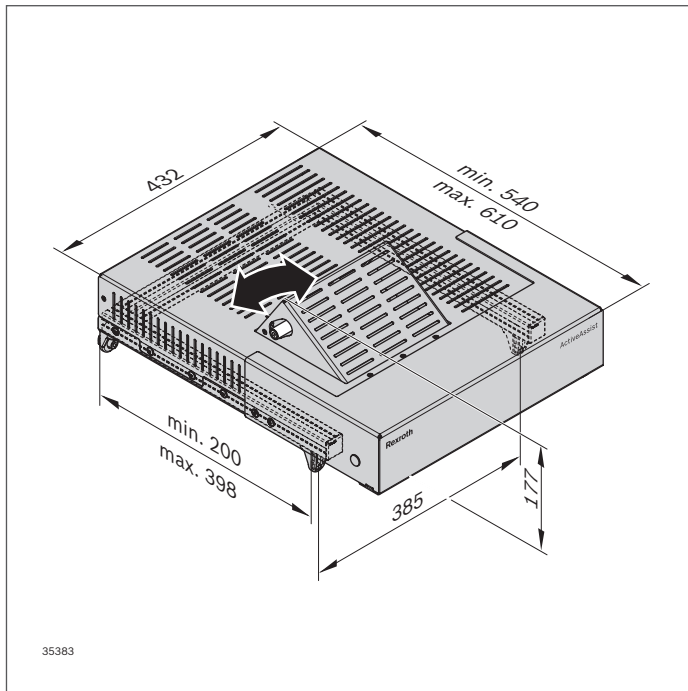
Scope of delivery

- ▶ Projection module incl. fastening kit and required cables (e.g. control cable for beamer)

ORDERING INFORMATION

Product designation	Material number
ActiveAssist projection module	3 842 558 335

TECHNICAL DATA

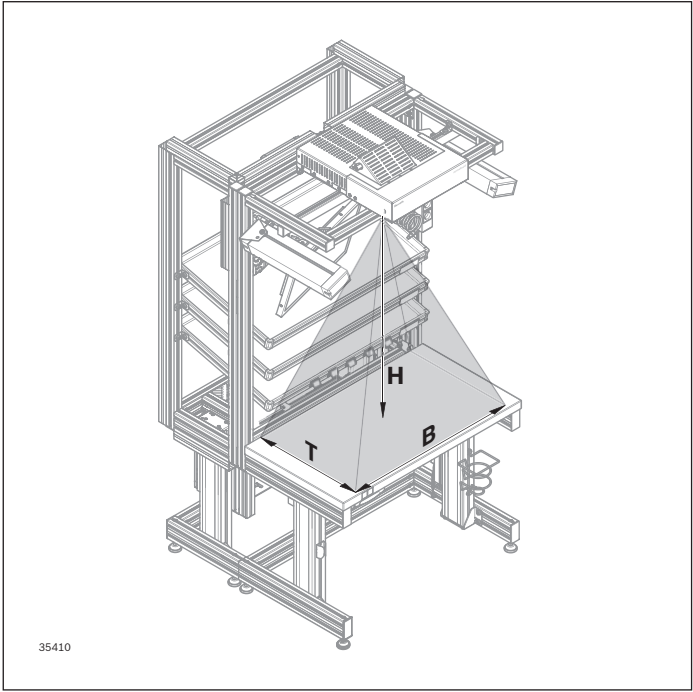


Notice:

The ActiveAssist system can be used on a height-adjustable workstation. Since the areas projected by the projector are always taught in at a certain height, it is important that the table surface and the parts storage (accessory upright) or the roller sections with the boxes are always adjusted simultaneously and at a height relative to the projection module. If, for example, the height of the projection module remains the same and the table surface and accessory upright are adjusted after teaching the projections, the geometry of the projections will be incorrect and the system will have to be reconfigured.

Material number		3 842 558 335
Properties		
Weight	kg	8.8
Optical properties		
Projection adjustment range	°	±5
Dimensions		
Slot		8; 10
Additional information		
Certification		CE

PROJECT PLANNING NOTES



Projection range

H (mm)	$T \approx 0.5 \times H + 65$ D (mm)	$B \approx 0.9 \times H + 100$ W (mm)
700	445	721
800	499	810
900	553	899
1000	607	988
1100	662	1077
1200	716	1166
1300	770	1255
1400	824	1344
1500	878	1433

- H** Height of projection area (vertical distance to the projector)
- D** Depth of projection area
- W** Width of projection area

ActiveAssist hand-tracking module



2



- By means of the 3D camera's depth sensor, the hand-tracking module checks the correct component selection in the material supply or the correct hand position of the operator in the assembly area. This determines if the process is being followed correctly, according to the work plan, and can then automatically move on to the next process step if required
- With the aid of freely scalable and placeable virtual buttons on the work surface, process steps are confirmed by a hand gesture and the next step is automatically visually displayed in the work plan

The ActiveAssist hand-tracking module increases process reliability by matching the employee's hand movements with the specified work plans.

ACCESSORIES

Required accessories

- ActiveAssist basic set
- ActiveAssist projection module

Recommended accessories

- Label projection 45°

DELIVERY INFORMATION

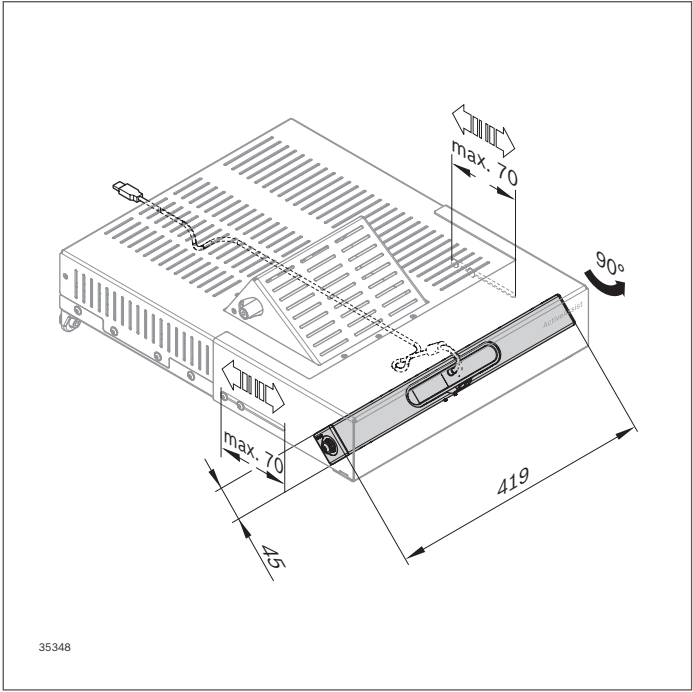
Scope of delivery

- Hand-tracking module incl. fastening kit and required cables

ORDERING INFORMATION

Product designation	Material number
ActiveAssist hand-tracking module	3 842 558 436

TECHNICAL DATA

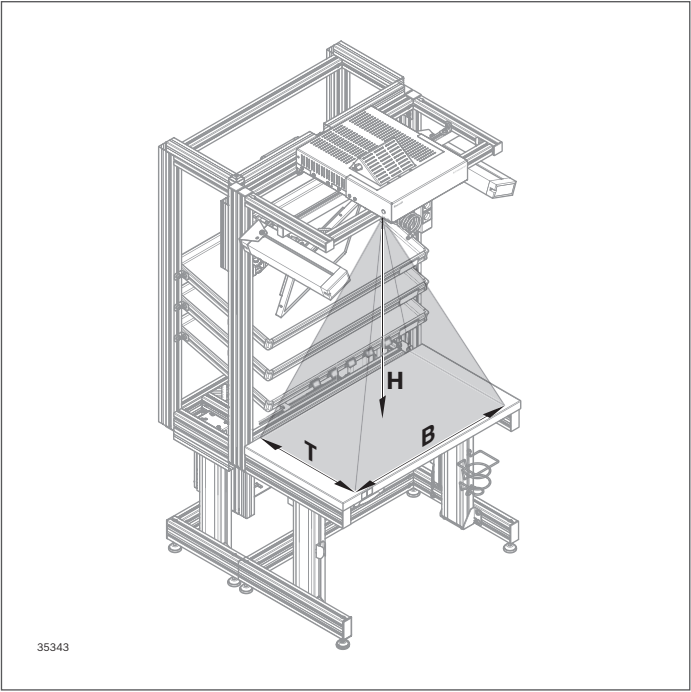


Notice:

The ActiveAssist system can be used on a height-adjustable workstation. Since the areas checked by the depth-sensing camera are always taught in at a certain height, it is important that the table surface and the parts storage (accessory upright) or the roller sections with the boxes are always adjusted simultaneously and at a height relative to the hand-tracking module. If, for example, the height of the hand-tracking module remains the same and the table surface and accessory upright are adjusted after teaching in the coordinates, the depth coordinates will be incorrect and the system will have to be reconfigured.

Material number		3 842 558 436
Properties		
Weight	kg	1.8
Total weight incl. projection module	kg	10.6
Optical properties		
Camera module offset	mm	70
Rotary adjustment range	°	90
Additional information		
Certification		CE

PROJECT PLANNING NOTES



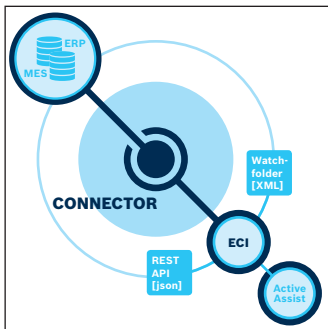
Camera detection range

H (mm)	$T \approx 0.9 \times H$ D (mm)	$W \approx 1.1 \times H$ W (mm)
700	663	808
800	746	924
900	839	1039
1000	993	1156
1100	1026	1270
1200	1119	1386
1300	1212	1501
1400	1306	1617
1500	1399	1732

- H** Height of detection area (vertical distance to the camera)
- D** Depth of detection area
- W** Width of detection area

ActiveAssist interfaces

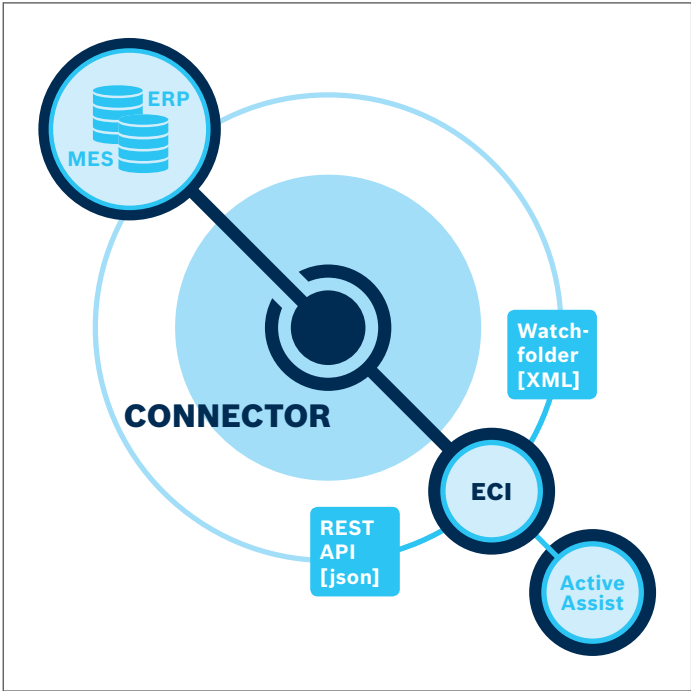
3



ECI – Interface for external communication

24

ECI – Interface for external communication



The interface for external communication allows for data exchange with higher level systems for the order processing.

- ▶ Interface for connecting to higher level production IT systems (MES/ERP system)
- ▶ ECI software module offers two standardized interfaces for connection:
 - XML file folder
 - REST API
- ▶ The following applications can be realized using the interface:
 - Serial number upload
 - Production order upload
 - Starting new production orders
 - Continuation of existing production orders (with and without specified production order number)
 - Feedback by Push & Pull of the current processing status

Customer-specific ActiveAssist connector

For a functional connection, a customer-specific connector may be necessary in addition to the interface. Contact us or your sales partner under: www.boschrexoth.com

ACCESSORIES

Required accessories

- ▶ ActiveAssist basic set with Release 2.0 of the ActiveAssist software

DELIVERY INFORMATION

Scope of delivery

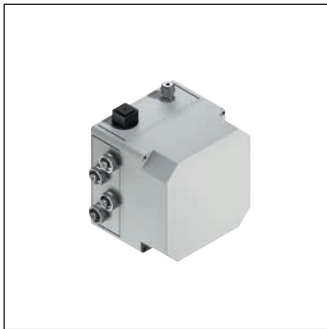
- ▶ License document incl. access authorization for interface specification

ORDERING INFORMATION

Product designation	Material number
Software license AA ECI (interface for external communication)	3 842 562 139

ActiveAssist Extension modules

4



Tool control unit extension module	26
---	-----------

Tool integration extension module	28
--	-----------

Tool localization extension module	29
Ultrasonic transmitter, Programming device	31
Adapter for ultrasonic transmitter to Nexa	32

Product identification, bar code scanner	33
---	-----------

Tool control unit extension module



- ▶ For improving process reliability by enabling the correct nutrunner at the correct process step
- ▶ The torque is defined by the functionality of the nutrunner
- ▶ It is possible to control a maximum of 4 nutrunners
- ▶ As an addition to all ActiveAssist modules

The tool control unit extension module is used to integrate nutrunners and improve process reliability.

ACCESSORIES

Required accessories

- ▶ ActiveAssist basic set
- ▶ Nutrunner from the line: Bosch C-Exact

Recommended accessories

- ▶ ActiveAssist projection module

DELIVERY INFORMATION

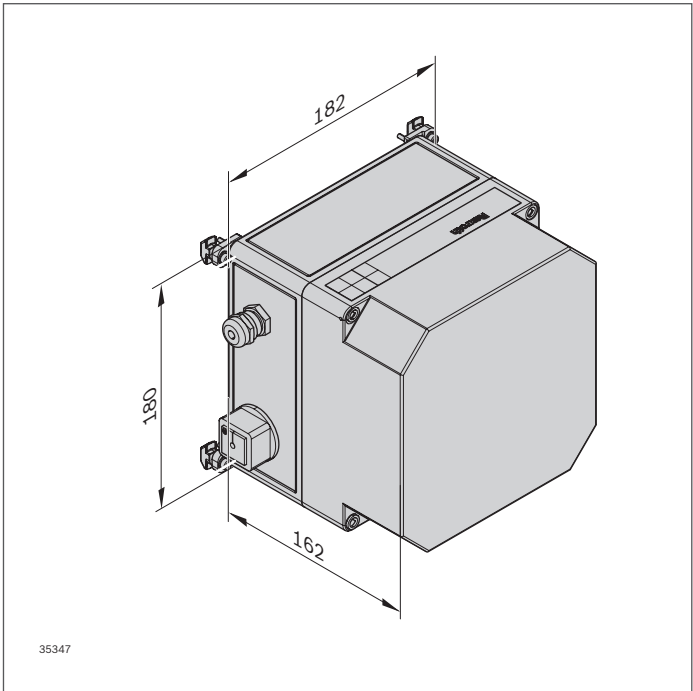
Scope of delivery

- ▶ Tool control incl. fastening kit

ORDERING INFORMATION

Product designation	Material number
Tool control unit extension module	3 842 558 447

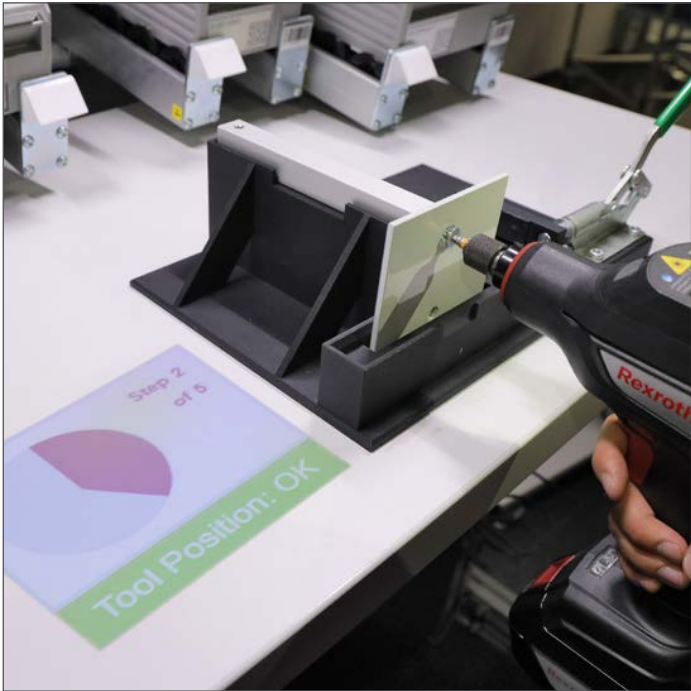
TECHNICAL DATA



4

Material number		3 842 558 447
Properties		
Weight	kg	3.2
Type		
Line voltage	V AC	100 ... 240
Mains frequency	Hz	50/60
Connection		4x M25 (36 V DC)
Dimensions		
Slot		10
Additional information		
Certification		CE

Tool integration extension module



- ▶ For the integration of open protocol-enabled tightening solutions into the ActiveAssist system
- ▶ Tightening parameters for each specific operation and process step are transmitted over Ethernet or WLAN
- ▶ After successful completion of the tightening process, there is an automatic forwarding to the next process step
- ▶ The tightening status can be projected into the ergonomic view of the employee on the table surface
- ▶ Easy integration of Rexroth tightening systems (see catalog Rexroth Tightening Systems, systems of external providers on request)

Notice:

- ▶ Software module is available for download in the product download area.
- ▶ Software module only functional in connection with license stick

The tool integration extension modules allows for the integration of intelligent tightening systems by means of Open Protocol ensuring that the correct tightening

parameter is transmitted to the tightening system in the correct process step.

ACCESSORIES

Required accessories

- ▶ ActiveAssist basic set with Release 2.0 of the ActiveAssist software

Recommended accessories

- ▶ ActiveAssist projection module

DELIVERY INFORMATION

Scope of delivery

- ▶ License stick

ORDERING INFORMATION

Product designation	Material number
Tool integration extension module	3 842 558 603

Tool localization extension module



- For determining the position and angle in 3D space of screwdrivers and other tools within an assembly by means of ultrasonic technology
- Release of the screwdriver at the correct tightening position by means of ultrasonic transmitter
- For the connection of more screwdrivers/tools, additional ultrasonic transmitters can be added (a maximum of 3 tools).

4

The tool localization extension module allows for the dynamic enabling of intelligent screwdrivers / tools.

ACCESSORIES

Required accessories

- ActiveAssist basic set with Release 2.0 of the ActiveAssist software
- Tool integration extension module

DELIVERY INFORMATION

Scope of delivery

- Ultrasonic receiver, ultrasonic transmitter with pre-configured frequency, charging adapter, fastening kit

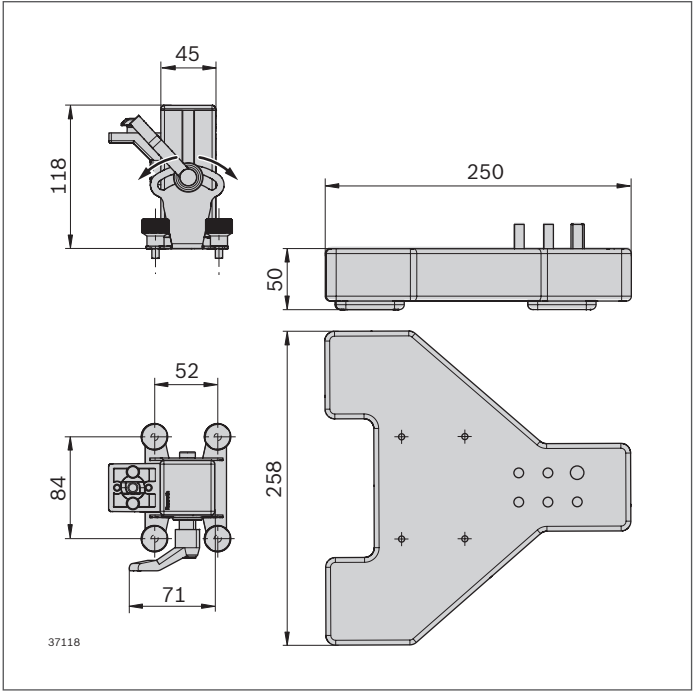
Recommended accessories

- ActiveAssist projection module

ORDERING INFORMATION

Product designation	Material number
Tool localization extension module	3 842 558 448

DIMENSIONS



Ultrasonic transmitter



- For the connection of more screwdrivers/tools, one additional ultrasonic transmitter is in each case required

4

DELIVERY INFORMATION

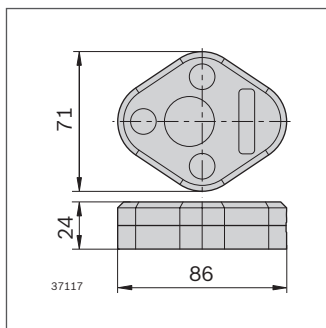
Scope of delivery

- Ultrasonic transmitter

ORDERING INFORMATION

Product designation	Material number
Ultrasonic transmitter	3 842 555 854

DIMENSIONS



Programming device

- If several tools are used, a programming device is required to change the pre-configured frequency range of the ultrasonic transmitter

DELIVERY INFORMATION

Scope of delivery

- Programming device (cable to connect screwdriver (micro USB) and computer (USB))

ORDERING INFORMATION

Product designation	Material number
Programming device	3 842 558 342

Adapter for ultrasonic transmitter to Nexo



- For attaching the ultrasonic transmitters to the screwdrivers of the Rexroth Nexo product series
- Easy removal of the ultrasonic transmitter for the charging process

DELIVERY INFORMATION

Scope of delivery

- Adapter for Nexo (angular nutrunner or handheld nutrunner) incl. fastening kit

ORDERING INFORMATION

Product designation	Material number
Adapter NXP (Nexo handheld nutrunner)	3 842 558 616
Adapter NXA (Nexo angular nutrunner)	3 842 558 617

TECHNICAL DATA

Material number	3 842 558 616	3 842 558 617
Properties		
Material	3D printing; black	3D printing; black

Product identification, bar code scanner



- ▶ Product identification ensures that the correct variant work plan (with the correct process data) is started
- ▶ The accumulated process data is stored in the production data base
- ▶ The following technologies can be used for product identification:
 - Teaching in RFID tags (available on request)
 - Scanning in of bar or data matrix codes using a bar code scanner

4



Bar code scanner

- ▶ Determines the product variant by scanning in bar codes (bar and data matrix codes)
- ▶ Automatically retrieves the correct work plan (variant documentation)
- ▶ Plug-and-play commissioning due to the predefined system configuration
- ▶ Different frequency ranges are available:
 - Bar code scanning based on a frequency of 433 MHz
 - Bar code scanning based on Bluetooth technology
- ▶ As an addition to all ActiveAssist modules

DELIVERY INFORMATION

Scope of delivery

- ▶ Bar code scanner incl. charging cradle

ORDERING INFORMATION

Product designation	Material number
Bar code scanner product ident 433	3 842 558 437
Bar code scanner product ident Bluetooth	3 842 558 578

TECHNICAL DATA

Material number	3 842 558 437	3 842 558 578
Additional information		
Frequency	MHz	433
		Bluetooth

ActiveAssist accessories



Label projection 45°	36
HEAP connection kit	37
Input unit push button	38

Label projection 45°



- For visualizing the projection of the projector on the material supply
- Can be mounted on the material shelf (in slot) or on the stop plate of the roller section (magnetic)

DELIVERY INFORMATION

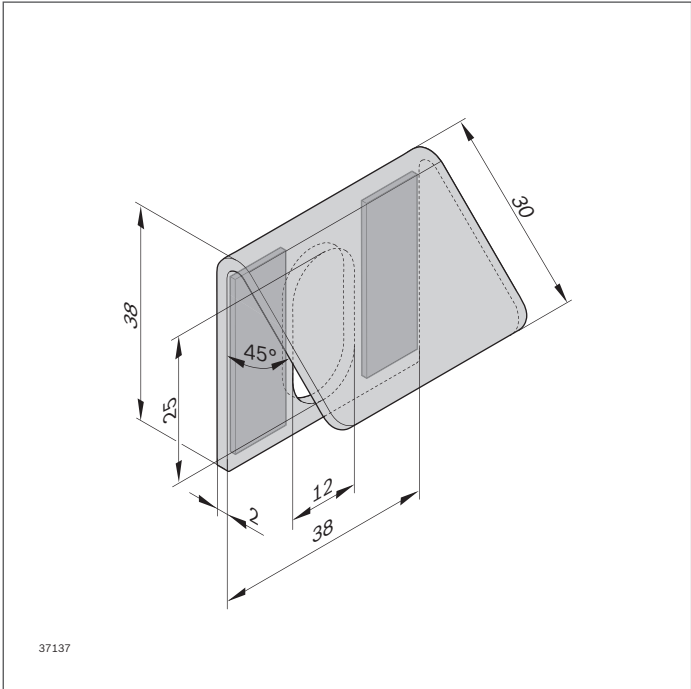
Scope of delivery

- Bracket, incl. fastening kit for material shelves and roller sections

ORDERING INFORMATION

Product designation	Packaging unit	Material number
Label projection 45°	10	3 842 558 560

TECHNICAL DATA



Material number	3 842 558 560
Properties	
Material	Metal; powder-coated, RAL 9010

HEAP connection kit



- For the mechanical connection of the accessory upright (material supply) to the work table on height adjustable workstations

Notice:

Height-adjustable workstations may only be used if the workstation and accessory upright (parts supply) can be moved synchronously.

5

DELIVERY INFORMATION

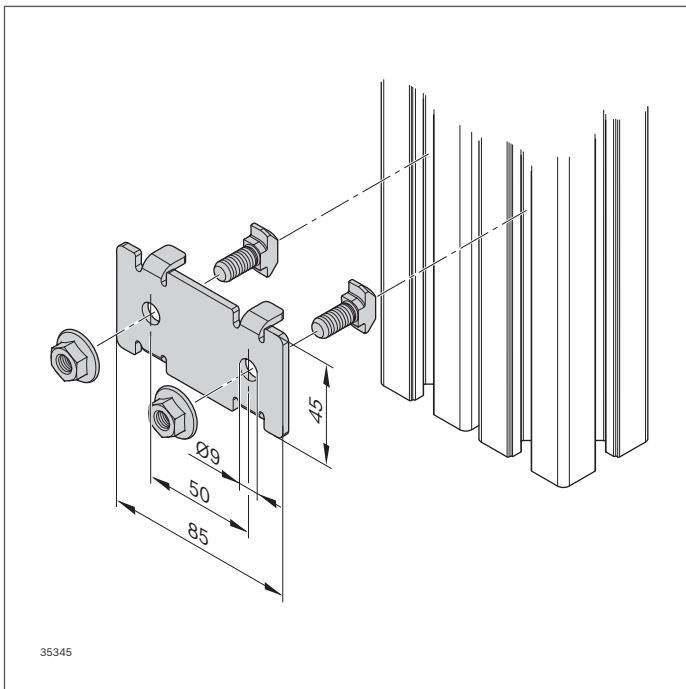
Scope of delivery

- Connection kit, incl. fastening kit

ORDERING INFORMATION

Product designation	Packaging unit	Material number
HEAP connection kit	4	3 842 558 344

TECHNICAL DATA



Material number	3 842 558 344
Dimensions	
Slot	10

Input unit push button



- For the manual confirmation of work steps in the ergonomic range of motion
- Incl. forward/backward function
- For mounting below the table top within the ergonomic range of motion of the operator

ACCESSORIES

Required accessories

- ActiveAssist basic set

DELIVERY INFORMATION

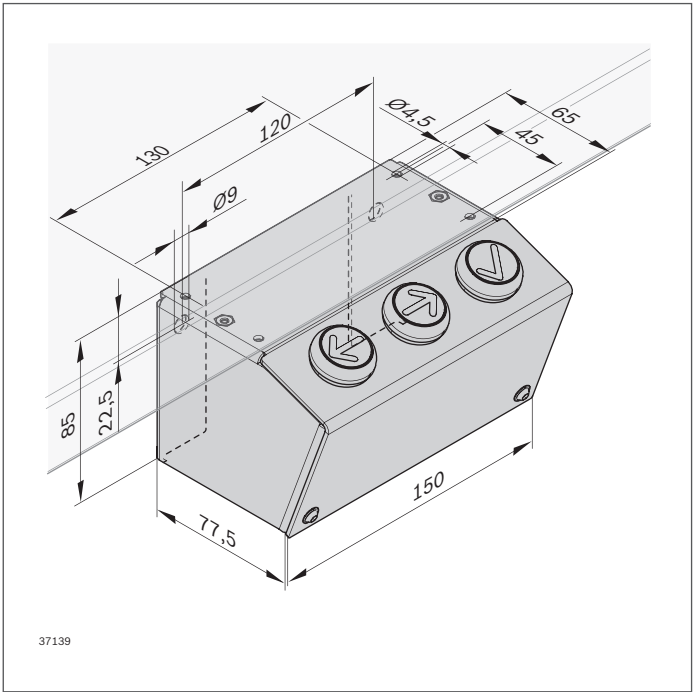
Scope of delivery

- Input unit incl. fastening kit

ORDERING INFORMATION

Product designation	Material number
Input unit push button	3 842 558 439

TECHNICAL DATA



Material number	3 842 558 439
Dimensions	
Slot	10

Technical data

Sample configurations

40

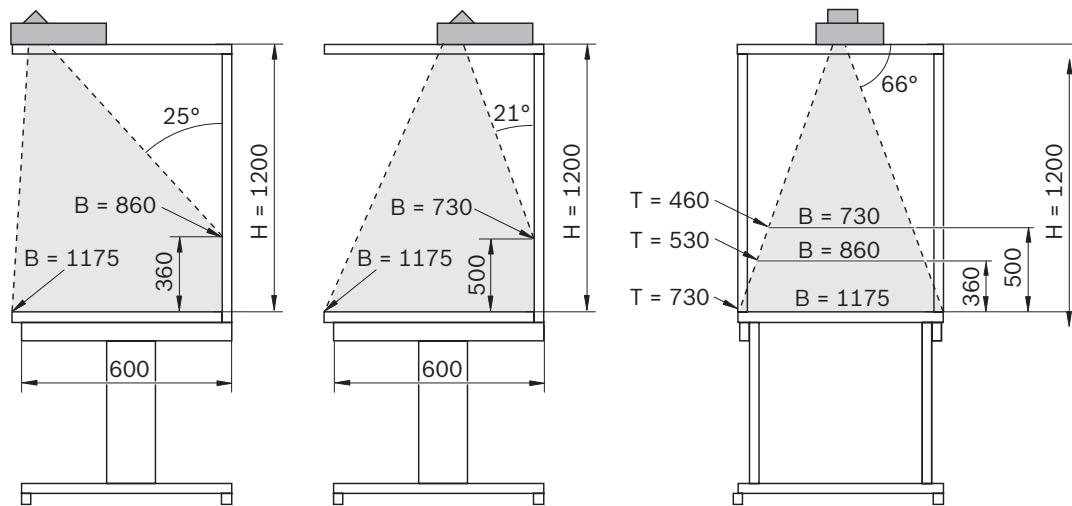
6

Sample configurations

Notice:

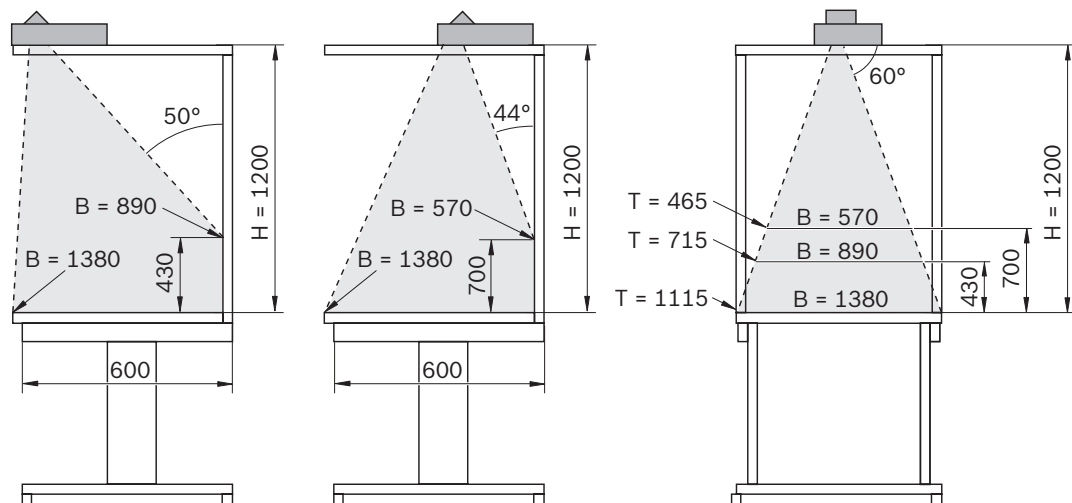
Height-adjustable workstations may only be used if the workstation and accessory upright (parts supply) can be moved synchronously.

Projection module with maximum projector zoom and middle mirror position (all dimensions in mm)



35342

Hand-tracking module (all dimensions in mm)



35344

Material number overview

3 842 517 045	15	3 842 557 968	15	3 842 558 437	33	3 842 558 578	33
3 842 517 201	15	3 842 558 335	16	3 842 558 439	38	3 842 558 603	28
3 842 522 585	15	3 842 558 342	31	3 842 558 447	26	3 842 558 616	32
3 842 523 910	15	3 842 558 344	37	3 842 558 448	29	3 842 558 617	32
3 842 555 854	31	3 842 558 436	19	3 842 558 560	36	3 842 562 139	24

Index

► A		► B		► S	
ActiveAssist accessories	35	Bar code scanner	33	Sample configurations	40
– HEAP connection kit	37			– Hand-tracking module	40
– Input unit push button	38	► E		– Projection module	40
– Label projection 45°	36	ECI – Interface for external			
ActiveAssist basic set	14	communication	24	► T	
ActiveAssist Extension modules	25			Technical data	39
– Product identification, bar code		► H		Tool control unit extension module	26
scanner	33	HEAP connection kit	37	Tool integration extension module	28
– Tool control unit extension module	26			Tool localization extension module	29
– Tool integration extension module	28	► I		– Programming device	31
– Tool localization extension module	29	Input unit push button	38	– Ultrasonic transmitter	31
ActiveAssist hand-tracking module	19			► U	
ActiveAssist interfaces	23	► L		Ultrasonic transmitter	31
– ECI – Interface for external		Label projection 45°	36		
communication	24				
ActiveAssist modules	13	► P			
– ActiveAssist basic set	14	Product identification	33		
– ActiveAssist hand-tracking module	19	Programming device	31		
– ActiveAssist projection module	16				
ActiveAssist projection module	16	► R			
Adapter for ultrasonic		RFID tags	33		
transmitter to Nexa	32				

Notes

Bosch Rexroth AG

Postfach 30 02 07
70442 Stuttgart, Germany
www.boschrexroth.com

Further information online:



ActiveAssist at the Bosch Rexroth website
www.boschrexroth.com/activeassist



Rexroth media directory
Commercial media and technical documentation is
available for download 24/7.
www.boschrexroth.com/mediadirectory

The data specified above only serves to describe the product. No statements concerning a certain condition or suitability for a certain application can be derived from our information. The information given does not exempt the user from the obligation of own judgment and verification. It must be remembered that our products are subject to a natural process of wear and aging.

R999001409 (2019-07)
© Bosch Rexroth AG 2019
Subject to changes!

